



Keys of the
FOUNDATION



ACTIVITY REPORT

2021

NATIVE
FOREST

And this is just
the beginning of
the
ADVENTURE...



www.native-forest.org



The project

Our objective

Grow and plant a million trees in 5 years based on 3 fundamentals:

- naturality (use of endemic species)
- biodiversity
- resilience.

The aim here is to give nature a «helping hand» so that the forests return to their original state as quickly as possible, while creating local jobs.

We're creating a permanent reforestation activity through the exploitation of the forest nursery. Reforest, preserve existing forests, create employment, awareness and education from the school level, and all of that working directly with local communities, these are the golden letters of the project.

Our vision

Planting and protecting forests is a long-term vision of our way of life, beyond our own existence, but it is also a story of education and exemplarity. The inclusion of local communities is the condition for the development of the project in the medium and long term, because, yes, growing trees takes time, but above all it needs a lot of labor.

We must stop watching our house burn down. We must

What's the plan ?

1st step: purchase of the land, viabilization and building of the first infrastructures

2nd step: Planting and development of the forest nursery. Meeting the local population to introduce ourselves and the project

3rd step: Reforestation, education, expansion

Our needs

150k€ have been invested in 2021 to launch the project (land, viabilization, infrastructures, labors and materials).

170k€ are necessary to finance the 2022 budget. Today we have to meet financial partners in order to pursue this laudable and huge project.

This budget includes the purchasing of materials, equipment, local labor cost and remuneration of the Native Forest local managing team.



Context

Despite major reforestation campaigns starting in 2010, deforestation in Ecuador has been massive and continues despite legislative changes. Banning cutting down trees is no longer enough... Let's replant trees to have forests to protect again !

NATIVE FOREST is a French association, law 1901 of general interest. It is working for the protection and forest regeneration while supporting local populations. The tax deduction for donations is 66% for individuals and 60% for companies.

To regain a deep respect for life, to place the human being in his responsibility towards the living.

INTRODUCTION

On January 13, 2020, the Native Forest association was formed to carry out a concrete action in reforestation and social assistance, with Ecuador as a destination for a first project. In a rather special global health context, 62 hectares of degraded forests were purchased and made available to the association for its activities.

In December 2020, the work began with the viabilization, then the construction of the living areas, the crop terraces, the start of the market gardening, until today where we lay the first bamboo of the forest nursery structure.

From the bottom of our hearts, we thank all the volunteers, the donors, all the people who helped start this ambitious project.

The association has been put to the test this year with the work, logistics, complicated access... and it is by involving the local farmers community of «Casas Viejas» as much as possible that we have managed to reach this stage of progress, that is to say the start-up of the forest nursery, a key stage of the Ecuadorian project.

Thanks to the construction work, then for the operation of the nursery and the reforestation campaigns, we provide local work in an area where there are very few. The pandemic has isolated and accentuated the lack of employment; not forgetting the three months of the rainy season where access is almost impossible.

The first plants, the first fruit trees planted in the earth have sprouted in the last few weeks... that's it, let's start the practical part of the botanical section!

This document shares the status of the project in Ecuador, the actions to be taken in 2022 with a 2022-2025 perspective, the 2020-2021 accounting balance, and the financing objectives.





Clearing around the house (feb21)

Protecting and planting forests involves several key steps if the long-term project is to be understood, starting with being able to live quickly on the site. At the same time, the start of the cultivation begins with the preparation of the crop sites, the soil, bio-insecticides and biofertilizers.

The site is supplied with water by gravity by 2 tanks of 5000 L each placed 80 meters above the level of the well.

An area of approximately 5000 m² was fenced to isolate crops from free-ranging animals such as cows, goats, pigs and dogs.

1. Project status as at end of March 2022

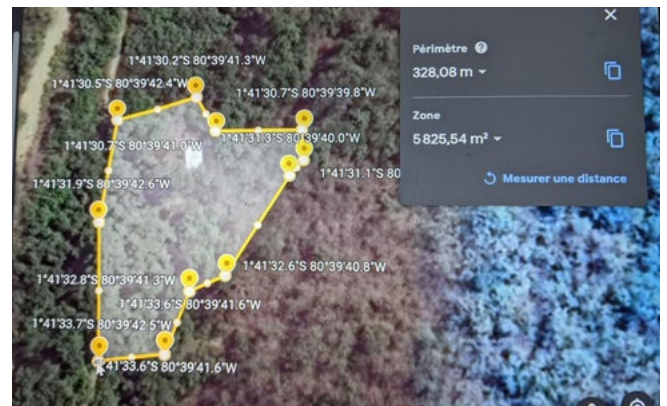
1.1 Building the living space

The site is quite isolated, 40 minutes from the Pacific coast by 4x4 or motorcycle, which requires infrastructure to live on site and some logistics for travel, food, equipment purchases, rotation of teams, and having another place to rest....



Drilling of a 35m well and 200m trench

The first few months were spent drilling a well, the purchase of motorcycles, the clearing of the land and the servicing work.



To create a first flat area, 120m² were terraced at the foot of the house. It helped build the kitchen. The idea is to keep a large open space on the mountain for the landscape, but also on the flowering trees to observe the birds.





With the house and the outside kitchen, the dry toilet allows a little comfort to live on site.



The house rehabilitation work began by cleaning the roof by removing the bamboo paneling underlay and plugging the leaking holes. After that will follow the walls, windows, doors and the floor in order to close the house and isolate it from insects and humidity. This work is planned for March/May 2022.

These first constructions will allow us to accommodate more people on the site. It is essential for the successful implementation of the project. Of course there is still a lot of work to be done in finishing the buildings, but the base is functional ! A rent on the coast allows us to reappropriate: laundry, equipment purchasing, etc.

write to us at:

www.native-forest.org



1.2 agricultural buildings

The relief around the house requires terracing to create flat spaces like beds of crops. The first terrace was built upstream of the slope behind the house to limit erosion during heavy rains. It is also used as a reserve for starting terrace crops, watered in drops.



For the construction of the greenhouse and nursery, a larger earthwork was required.



The greenhouse allows us to have a place of cultivation protected from the rain and the strong local climate changes. It will allow the germination of forest plants and the cultivation of vegetable species that need protection, such as tomatoes.

The forest nursery is built, it occupies the flat part along the access road. It is being cleaned due to the 5 meters of free space that must surround the nursery. Two shelters of 5m x 7m were built to accommodate the first 5,000 trees.



The greenhouse protects fragile crops from bad weather

The small organic forest nursery of Pedro Pablo Gomez (the village connected to the nearest road network) will accompany us to start the production of native forest plants, which also allows for the full integration of local actors in the process.



Forest Nursery of Pedro Pablo Gomez

NATIVE
FOREST

1.3 Organic cultivation

The production of the site is done through the principles of agroecology, we adapt to the local context, native species and climate variations. You start with a vegetable garden and you end with a forest nursery, through compost, lombrication, cultivation terraces, greenhouses, biofertilizers and bio insecticides, etc.



Start-up of the 1st compost

Vegetables and fruit production will be consumed on site and the surplus will be sold to Casas Viejas or Pedro Pablo Gomez



California earthworm breeding for humus

Our goal: to be as self-sufficient in food as maximum.

While working organically, we seek to diversify the local supply of fruits and vegetables in order to increase food quality on the site, but also for neighboring communities by making accessible



Growing squash and peppers on the upper terrace



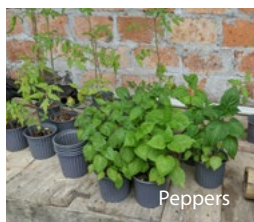
Relieving body aches with plants, **is inevitable !**
Soon, find our condensed "bible" of natural medicine

We reserve you some surprises...
Stay connected !

Passion fruit along the kitchen



Germination of the 1st vegetable seeds



Peppers



Tomatoes



Mango tree



Avocado tree



Start of a vegetable garden



Banana tree



Papaya tree

Working in the market gardening allowed us to start the cultivation of the site in general. We are now in the preparation phase of the bio-insecticides and bio-fertilizers that will be used throughout the growth of the plants, whether they are fruit, vegetable and of course forest.



Watermelon Black Mountain

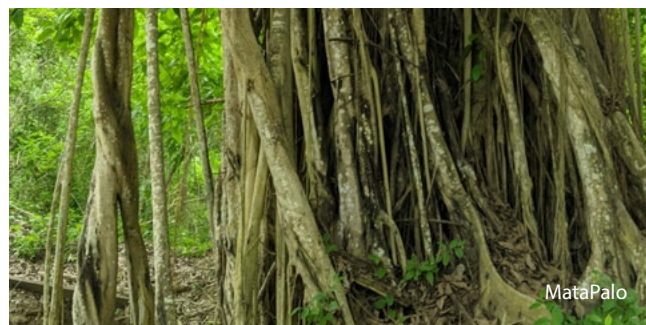
Far from the colonialist attitude too often encountered of the type “... but I know, you have to do it like that ...” Native Forest seeks to provide examples of alternative crops to the practices used by local farmers. Today we put into practice by ourselves, then the results will speak for themselves. We have finally reached the important stage of the cultivation of the forest nursery, which will begin in April 2022, the selection of native species to grow being sufficiently advanced to begin.



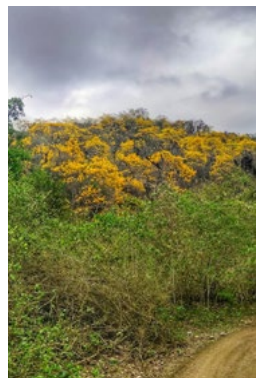
Fernand Sanchez
seed collection



The flowering of the Guayacan (Ipe wood) is always spectacular



MataPalo



Higueron (Ficus cuatrecasana)

« When one person dreams, it is only a dream. But if many people dream together,
it is the beginning of a new reality. »

F.Hundertwasser

1.4 Casas Viejas community

The social component of the project is fundamental. Nothing concrete can be achieved in the long term without the maximum involvement of the surrounding communities.



It is in this dynamic that we have strongly established ourselves socially. The aim is of course to help the local population as much as possible, while accompanying them to integrate our approach to protecting existing forests and reforestation.

It is a fact, the deforestation has been massive on the Ecuadorian coast, the wooded plots are burned for cultivation, mainly for corn, cocoa and coffee... Once the land is exhausted, the plots are used for grazing, mainly cows, which ends up making the land sterile by compacting.



Our entrance door was the work to be done for the servicing and construction of the living space.



We dedicated a significant part of our budget to pay for a construction team led by Franklin, one of Casas Viejas' neighbors experienced in bamboo construction and highly motivated to participate in the project. He also helped us to find and negotiate the materials we bought to avoid «gringos» prices. We now control the price and logistics for all the inputs needed for the project.

The operation of the nursery as well as the reforestation campaigns will also require a significant workforce given the objectives set. We are proud to have been able to give work to the community at a time when there was no work at all. In fact, the health crisis has greatly isolated certain populations, followed by the rainy season during which road access becomes almost impossible. Bringing in local work has allowed us to be welcomed with open arms, it has proven our commitment. We are also in discussions with the community to help the local school and its hundred students: A garden to be created in the school, participation in reforestation campaigns, various courses and awareness of nature thanks to the activities of Native Forest.



2. 2022 - 2025 Objectives and roadmap

2.1 2022 - 2023 objectives

We bought the land in our own name for a very specific reason: this is a guarantee that trees will not be cut in the future. The protection of all living species on these 62 hectares is a prerequisite for the coherence of the project.



2.1.1 Main objective: REFOREST !!

This is the background of the project, reforesting as much as possible using respectful and resilient methods, while helping the local populations as much as possible.

To initiate this reforestation phase, the objective is to plant 20,000 native trees on the 62-hectare plot. This is about selective reforestation, that is to say, replanting endemic species that have disappeared due to unreasonable local logging.

Achieving this goal involves several elements:

- Grow the 20,000 native trees from seeds in the field nursery
- Prepare for reforestation 2 to 4 hectares of land among the 62 hectares
- Prepare the irrigation system for the first years of growth.

2.1.2 To finish the first construction phase

It concerns the following projects (all ongoing):

- To extend the forest nursery to increase its capacity up to 25.000 trees

- To finish the sanitary facilities
- To close the house's walls using the local traditional method (Bamboo + cob)
- To build an area dedicated to the well being of volunteers (yoga / meditation / well being...).



2.1.3 Continue site cultivation

We are talking here about gradually increasing crop areas. Through the principles of agroforestry, we mix agricultural production with reforestation. This enables soil regeneration and crop and forest resilience in the medium and long term.

An area of the land will be exploited in collaboration with a first local farmer to cultivate the same species as now, but from organic seeds, in multiple crops (e.g. 'las tres hermanas', the three sisters maize + manioc + bean) and without chemical support.



2. 2022 - 2025 Objectives and roadmap

Currently, the local method is based on glyphosate + roar. Deforestation is global and almost done in the south ouest quarter of Ecuador (Manabi, Santa Elena and Guayas regions).

2.2 Roadmap 2023-2025

From a botanical point of view, we are building the infrastructure to meet the following expectations:

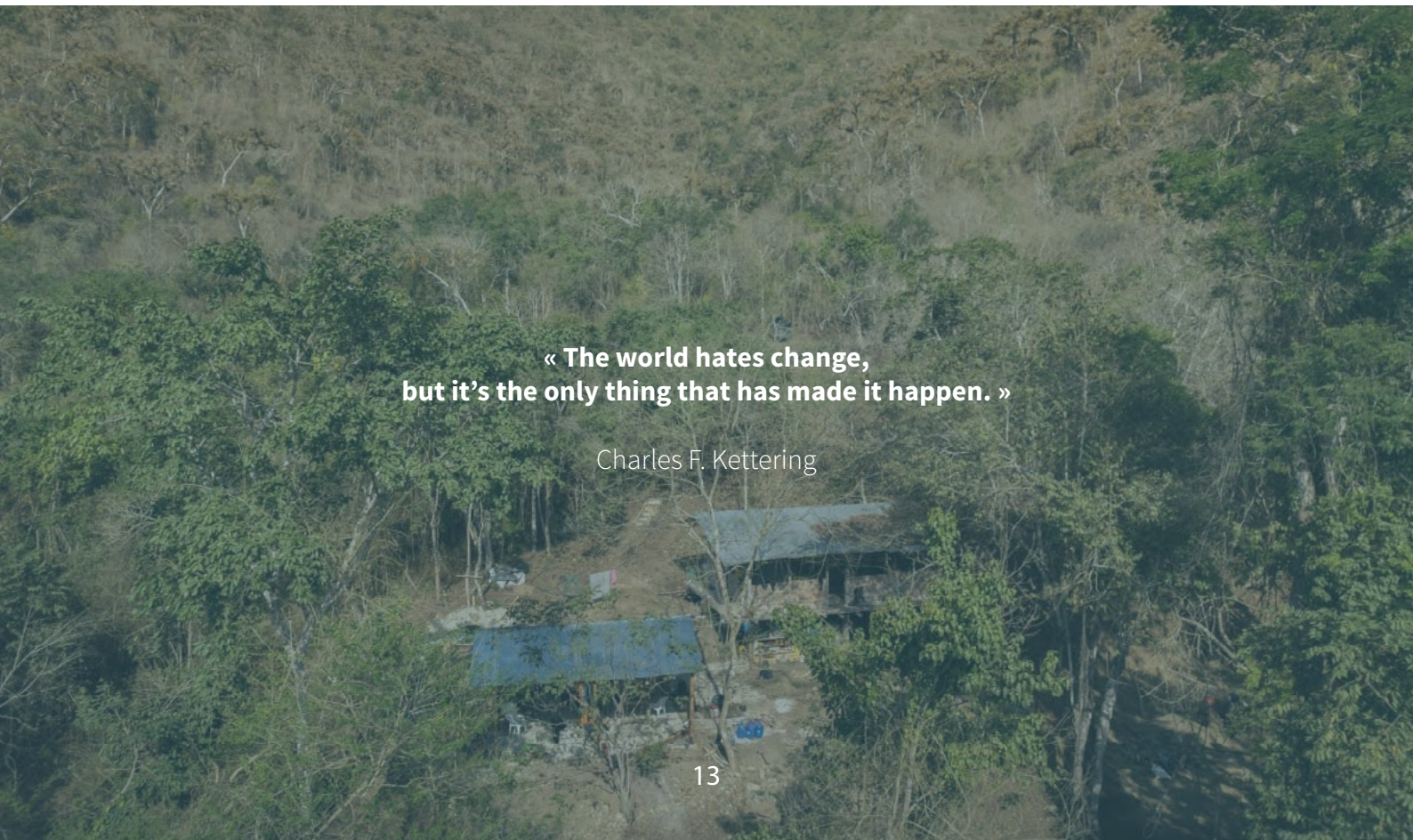
- Reforest 3 to 5 hectares per year on the 62 hectares. This is referred to as selective reforestation with native species exiting the field nursery.
- Test the Miyawaki method on one hectare near the current river
- Further expand the nursery to be able to provide maximum local projects.
- Find heavily degraded terrain to reforest with the results of the Miyawaki method test on the ground. The goal is to work in collaboration with small farm owners close to the current land.

- Explore the possibility of entering the carbon market through the principles of conservation of the existing dry tropical forest and areas reforested.

The social component will continue along the same lines objectives:

- Create stable economic activity through the need for forest nursery labor
- Participate in school activities in Casas Viejas
- Test new, more resilient farming methods with local farmers by testing in our field (no risk to the locals)
- Preservation of local culture and medicinal uses of plant species

We also have the opportunity to speed up the process of protecting the site by protecting endangered animal species such as certain hummingbirds and monkey species.



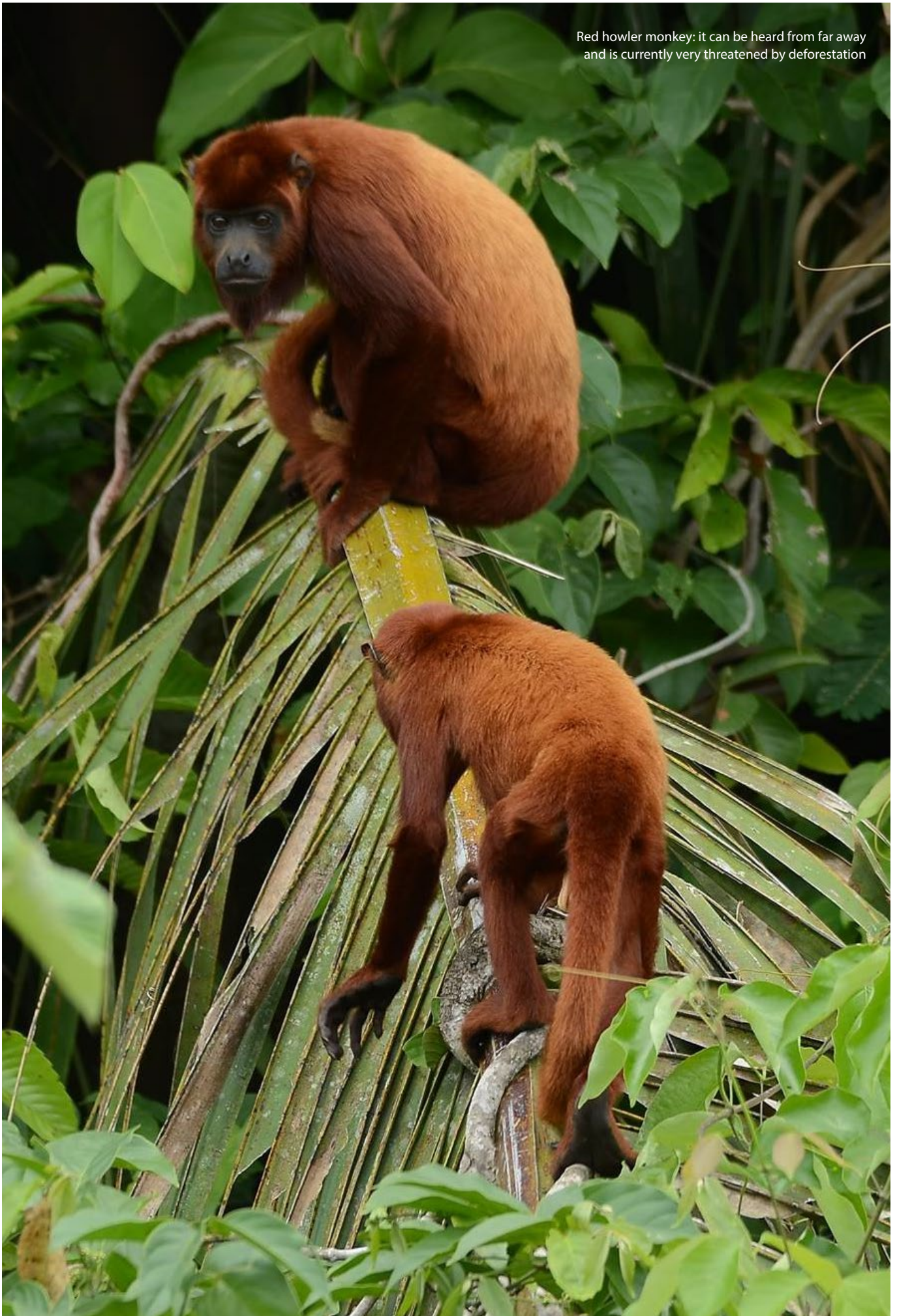
**« The world hates change,
but it's the only thing that has made it happen. »**

Charles F. Kettering

Estrellita Esmeraldena: the second smallest hummingbird in the world, endangered



Red howler monkey: it can be heard from far away
and is currently very threatened by deforestation



3. 2021 Profit and loss

The project began with the purchase of land by the Native Forest team, made up of friends who shared the common will to take concrete action for reforestation and direct social assistance.

This year the main expenditures were on building materials and equipment.



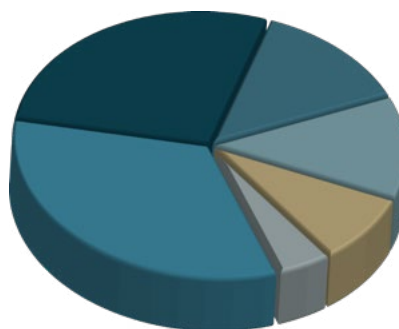
Expenses from creation to end Sept 21: 23.000 €
Expenses from Oct 21 to March 22: Approximately 10.000€

Financing

The advance of the funds needed for the first year was made by the founders at 95%, for 17.000€ at the end of Sept 21. The 5.000€ balance came from the donations received on the Hello Asso platform.

4 FTEs were completed within the association on a voluntary basis for 2021. We must now fund this position to maintain the available labor.

2021 Expenditure categories



21% Food
17% Vehicles and Transportation
14% Housing
10% Labor
5% Maintenance
33% Materials and tools





4. Funding objectives

Starting during the COVID period prevented us from having any public subsidies or support. Native Forest's concrete and commendable activity and its communication materials (website, social network animation, presentation videos, etc.) must enable us to find long-term financial support.

The founders put forward 15.000€ in 2022 to allow the continuity of the project until the first tree plantations in the nursery.

To secure access, facilitate the transport of volunteers and reduce delivery costs, the purchase of a 4x4 vehicle is essential. The car market is heavily taxed in Ecuador, you should expect around. 15.000€ for a used vehicle in good condition.

We plan €15k to continue the construction in 2022, €10k to launch the tree crops on a reasonable scale and 4 FTEs for this year, as in 2021 except that we cannot remain engaged as volunteers.

tableau budget dépense:

Expenditures categories	Amount needed
4x4 vehicle	15.000€
Building materials	14.000€
Labor	8.000€
Food & transportation	6.000€
Tree nursery	10.000€
4 FTEs	100.000€
TOTAL	153.000€

Our budget to be financed in 2022 is 153.000€. We are now seeking to confirm this commitment with one or more partners, with the goal of \$7 per tree planted.

We are open to discussing the different funding possibilities depending on the type of actor that wants to accompany us.

Ideally, we would also find a partner to help us buy degraded land close to our own to reforest it and open a nature reserve. This year is our key milestone, with the first beneficiaries being the surrounding communities.

**The future is not rosy,
it is GREEN!!**



5. The team

It was our friendships, shared values, the diversity and complementarity of our profiles that enabled us to launch this ambitious and very simple project: planting trees.

If we look at the economic decadence of our societies with a smile, our happiness is a decision that the love of our neighbor and our environment makes possible.

Aware of the environmental and humanitarian emergency, we are committed to a more humane and resilient society.



Lucas



Allison



Benjamin



François-Joseph



Andrés



Kristen



Paul-Eric



Marion



Stéphane



Pierre-Alexandre



Julien



Vicki



Adrien

« Together, on se retrouve les branches
»

contact@native-forest.org

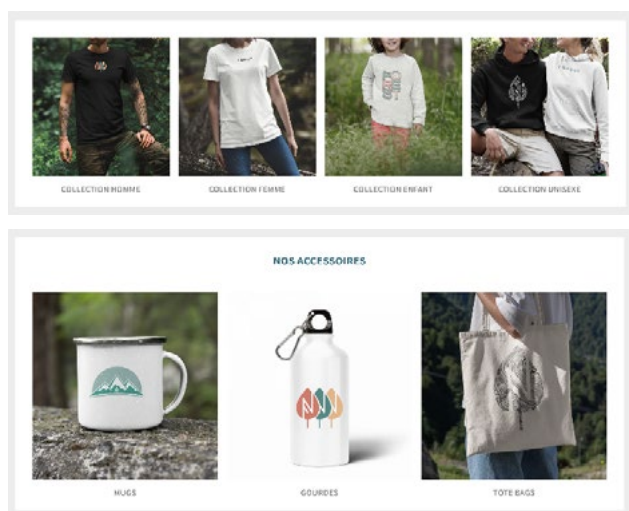
6. How helping us?

6.1 E-shop of clothing and accesories

BUY RESPONSIBLE through our online shop!

Organic cotton clothing (made in belgium, printed in France) & useful and reusable accessories, everything is designed to help us transmit beautiful values. Let's show it's possible.

www.native-forest.org/e-shop



6.2 Donation by bank transfer

Bank transfer can be done straightly on the Association bank account:

IBAN : **FR76 1558 9228 0707 8925 0094 060**

BIC : **CMBRFR2BARK**

Dons par chèque

Les chèques doivent être libellés à l'ordre Association NATIVE FOREST et sont à adresser avec le formulaire de don ci-après à l'adresse suivante :

NATIVE FOREST
57 rue sainte Barbe, 22500 PAIMPOL

Dons par virement

Les virement sont à effectuer directement sur le compte de l'association NATIVE FOREST

IBAN : FR76 1558 9228 0707 8925 0094 060

BIC : CMBRFR2BARK

Donation on Hello Asso platform

You will find the link at the top left of the homepage **www.native-forest.org**. The crowdfunding platform helped us collect donations in 2021 and will allow us to launch a second campaign for tree planting in 2022 and 2023.

6.3 Come and help locally!

We are starting to receive the first volunteers in 2022, it is an opportunity to come and visit us!!



7. Contact us

For more information on the NATIVE FOREST project,
contact:

Pierre-Alexandre PILET

papilet.contact@gmail.com
Whatsapp : +593 96 886 1627

Lucas MORIN

lucasmorin.contact@gmail.com
+33 6 33 55 25 86

www.native-forest.org
contact@native-forest.org



VÊTEMENTS

HOMMES - FEMMES - ENFANTS

RESPONSIBLE STORE
www.native-forest.org/e-shop



MataPalo

SOUTENIR NATIVE FOREST !

IF YOU WISH TO MAKE A DONATION BY CHEQUE OR BANK TRANSFER, PLEASE FILL IN THE FORM BELOW AND RETURN IT TO US EITHER BY E-MAIL OR BY POST:

BY MAIL: (in one click)

BY POSTAL STREET:

**ASSOCIATION NATIVE FOREST
57 RUE SAINTE BARBE, 22500 PAIMPOL**

I MAKE A DONATION OF€

BY CHECK TO : ASSOCIATION NATIVE FOREST

BY BANK TRANSFER TO THE NATIVE FOREST ACCOUNT

IBAN : FR76 1558 9228 0707 8925 0094 060

BIC : CMBRFR2BARK

NAME:.....SURNAME:.....

SOCIETY :.....

ADRESS :.....

POSTALCODE:.....STREET:.....

TELEPHONE :.....

EMAIL :.....

YOUR DONATION IS TAXABLE, A TAX RECEIPT WILL BE SENT TO YOU.

FOR INDIVIDUALS: Income tax: tax reduction equal to 66% of the amount of the donation, for donations up to 20% of taxable income. The fraction of the donation exceeding the limit can be carried forward to the next five years.

FOR COMPANIES: Corporate tax - BIC: tax reduction equal to 60% of the amount of the donation, for donations within the limit of 0.5% of the turnover before tax; for small companies with a limited turnover, an alternative limit in absolute value of €20,000 has been created by the 2020 finance law (idem for donations issued by SCI). The fraction of the donations exceeding the limit can be carried forward to the next five years.

Save the document (Ctrl + S)

(Files > Save)





**We look forward to
to be able to exchange
soon!**

NATIVE FOREST

www.native-forest.org

